

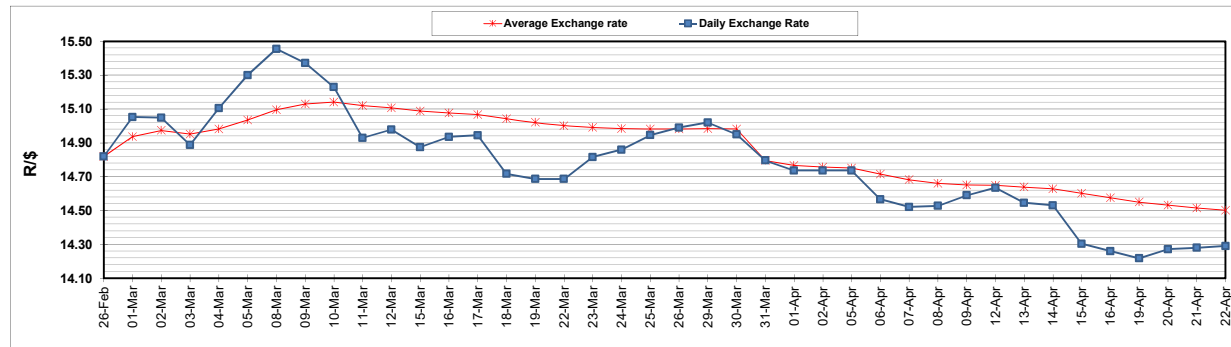
	PETROL 95 ULP	PETROL 93 ULP & LRP	DIESEL 0.05%	DIESEL 0.005%	ILL. PAR.
GAUTENG PUMP PRICE (SA c/l) AS FROM 07/04/2021	1,732.000	1,710.000	-	-	-
WHOLESALE PRICE (SA c/l) AS FROM 07/04/2021	-	-	1,477.620	1,480.020	880.488
SINGLE NATIONAL MAXIMUM RETAIL PRICE	-	-	-	-	1,106.000
BASIC FUEL PRICE - 22/04/2021 (SA c/l)	699.828	686.072	649.895	653.524	637.931
PRESS RELEASE CONTRIBUTION TO BFP 07/04/2021 - 22/04/2021 (SA c/l)	736.170	724.170	690.630	693.030	667.128
UNIT OVER/(UNDER) RECOVERY - 22/04/2021 (SA c/l)	36.342	38.098	40.735	39.506	29.197
AVERAGE BASIC FUEL PRICE 31/03/2021 - 22/04/2021	711.144	696.678	647.812	650.874	632.267
AVERAGE UNIT OVER/(UNDER) RECOVERY 31/03/2021 - 22/04/2021	4.143	8.080	31.936	31.862	24.861

ANALYSIS MOVEMENT OF AVERAGE OVER/(UNDER) RECOVERY

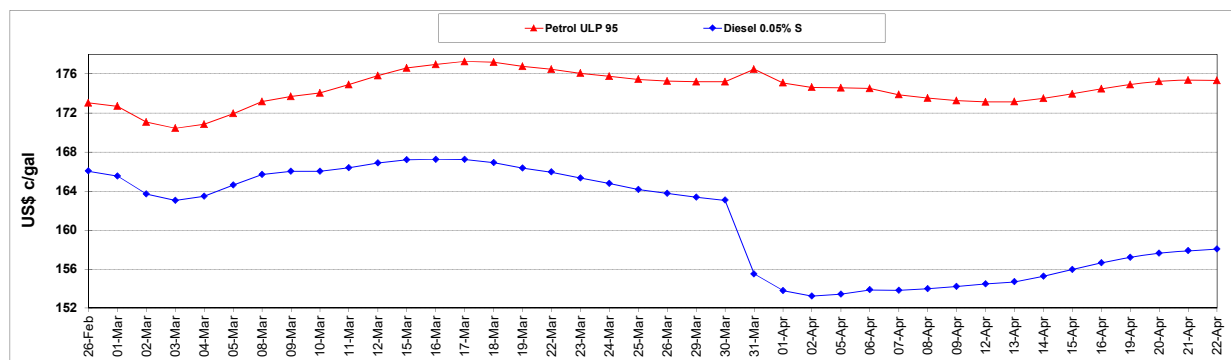
	PETROL 95	PETROL 93	DIESEL 0.05%	DIESEL 0.005%	ILL. PAR.
- MOVEMENT IN INTERNATIONAL PRODUCT PRICES	(19.403)	(14.988)	10.486	10.311	3.926
- MOVEMENT IN EXCHANGE RATE	23.547	23.068	21.450	21.551	20.935
AVERAGE UNIT OVER/(UNDER) RECOVERY 31/03/2021 - 22/04/2021	4.143	8.080	31.936	31.862	24.861

R/\$ EXCHANGE RATE - (R/\$14.2910- 22/04/2021)

EXCHANGE RATE USED IN BASIC FUEL PRICE



INTERNATIONAL PRODUCT PRICES OF BASKET USED IN BASIC FUEL PRICE



BASIC FUEL PRICE IN SA CENTS PER LITRE

